



A MULTIMEDIA COLLECTION FROM
ENHANCED INTEGRATED FRAMEWORK (EIF)

Exploring the agriculture and trade nexus in Africa



Enhanced Integrated Framework

Trade for LDC development

MORE INFO /
VIEW ONLINE >

In some of the most impoverished countries in the world, agriculture is the backbone of the economy. From household cultivation to cooperative harvesting to large-scale commodity production, the growing of crops for sustenance and for income supports millions of the continent's poor.

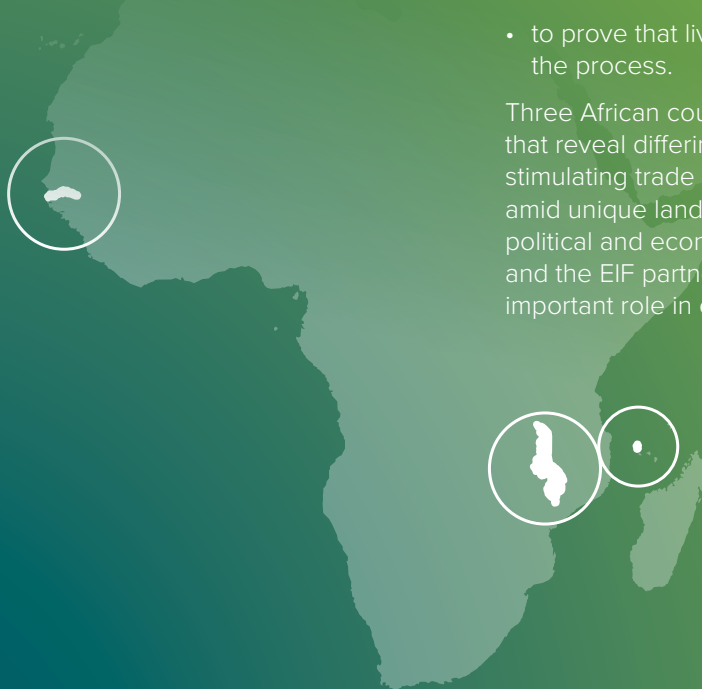
To create more stability for citizens and to increase exports for sustainable development, countries are taking trade analysis and applying it to their agricultural sectors – building on the promise of higher yields, better quality harvests and more markets.

These efforts are as diverse as the people, the countries and the geographies, and EIF has produced a suite of videos, stories of impact, photo essays, profiles and more to draw attention to this vital area of research, action and outcome.

The purpose of the collection:

- to demonstrate how agricultural production can be enhanced while expanding markets
- to show how trade can directly impact farmers
- to reveal how women with ideas are spurring new industry
- to reflect how strategic partnerships catalyze outcomes
- to depict how agriculture fosters LDC development
- to prove that lives are changing in the process.

Three African countries were selected that reveal differing approaches to stimulating trade and development amid unique landscapes and specific political and economic conditions, and the EIF partnership is playing an important role in each nation.



MALAWI



Cultivating soy and groundnuts is not the norm for Malawian farmers, with the country's major crops being corn and tobacco. But a shift is underway with a new government trade strategy of diversification and value addition, and a group of pilot farmers is already reaping the rewards.



USD\$47 million
in new agriculture exports stimulated

TRAINING AND ADOPTION OF NEW
AGRICULTURAL TECHNIQUES RESULTED IN:

+329% Increase in farmer
incomes for **soya**
(from MK 24,000 to 103,000)

+197% Increase in farmer
incomes for **groundnuts**
(from MK 34,000 to 101,000)



VIDEO



youtube.com/watch?v=gB9-88YkF3M

**For more stories from Malawi,
including the select pieces below, visit**
trade4devnews.enhancedif.org



FEATURE

***In Malawi, enriching what happens
between farm and table***

The country is working hard to get its
harvests to consumers – in the country,
region and beyond



PHOTO ESSAY

Malawi reaping what it's sowing

Targeting soy and groundnuts for export,
the country and its farmers are seeing
rewards

COMOROS



While you may never have heard of ylang-ylang, you have certainly smelled it. The delicate, starfish-shaped yellow flowers are a key ingredient in perfumes the world over, and 60% of it comes from Comoros. But the three-island nation just north of Madagascar knows it could do more with its precious product, including crafting its own perfumes, essential oils, lotions and more – if its business-minded citizens had the right tools.



45% of Comoros citizens of working age are actively employed, THE LOWEST IN SUB-SAHARAN AFRICA

5 Cooperatives established focusing on ylang-ylang, vanilla and clove, providing employment opportunities

7 Female business owners provided packaging and other tools to expand their ylang-ylang-focused businesses



VIDEO



youtube.com/watch?v=cc80Q3leMjl

For more stories from Comoros, including the select pieces below, visit trade4devnews.enhancedif.org



PHOTO ESSAY

Comoros making scents

Expanding opportunities for ylang-ylang pickers, distillers, perfumers and exporters



PROFILE

Ibrahima Sittina Farate: As one woman innovates, a nation's exports set to bloom

In Comoros, a doyenne has plans for her country's unique yields

THE GAMBIA



*Cultivating cashews
means cash for Gambians.*

The country has targeted this high value crop for export, trained farmers in better planting techniques and equipped processors with needed equipment and certifications. With a brand new cargo facility at the airport able to transport the country's exports, the stage is set for a cashew bonanza.

1,300 farmers trained in cashew cultivation techniques
FOR HIGHER YIELDS AND BETTER QUALITY

7 Gambian cashew processors supported
TO OBTAIN FOOD SAFETY (HAACP) CERTIFICATION TO FACILITATE EXPORTS

1 Airport cargo facility with cold storage and security
MEANING **THE GAMBIA IS NOW READY FOR BUSINESS**



VIDEO



youtube.com/watch?v=YugmThm1sD0&t=4s

For more stories from The Gambia, including the select pieces below, visit trade4devnews.enhancedif.org



FEATURE

The Gambia sounding out its agricultural potential

With cashew prices surging and armed with solid trade policy, the country is looking to boost its farmers and processors



PHOTO ESSAY

Cashing in on cashews in The Gambia

From farmers' fields to export markets



enhancedif.org



@EIF4LDCs



facebook.com/eif4ldcs



youtube.com/user/EIF4LDCs



flickr.com/photos/152818923@N04/



linkedin.com/company/11161784/

**EIF Executive
Secretariat at the WTO**

Rue de Lausanne 154
CH-1211 Geneva 2
Switzerland

+41 (0)22 739 6650

✉ EIFCommunications@wto.org



Enhanced Integrated Framework

Trade for LDC development

The Enhanced Integrated Framework brings together partners and resources to support the Least Developed Countries in using trade for poverty reduction, inclusive growth and sustainable development.

EIF Partner Agencies

International Monetary Fund (IMF)

International Trade Centre (ITC)

United Nations Conference
on Trade and Development
(UNCTAD)

United Nations Development
Programme (UNDP)

World Bank Group

World Trade Organization (WTO)

United Nations Industrial
Development Organization
(UNIDO)

World Tourism Organization
(UNWTO)

EIF Trust Fund Manager

United Nations Office for Project Services (UNOPS)

EIF Trust Fund Donors

